

- NOTES:
1. CONDUITS TO HAVE 150 MM OF COVER UNDER DESIGN SUBGRADE
  2. WHOLE OF TRENCH UNDER KERB AND CHANNELS AND ROAD PAVEMENT TO BE BACK FILLED WITH CLASS 2 FINE CRUSHED ROCK.
  3. WHERE PATH IS DIRECTLY BEHIND KERB CONDUIT TO EXTEND 1.700 M BEYOND KERB ON BOTH SIDES OF ROAD.

CHECKED

*Jan Stacey*

APPROVED

*Jim Conway*

SCALE

N.T.S.

**KNOX CITY COUNCIL**

TELSTRA UNDER ROAD CROSSING

DATE

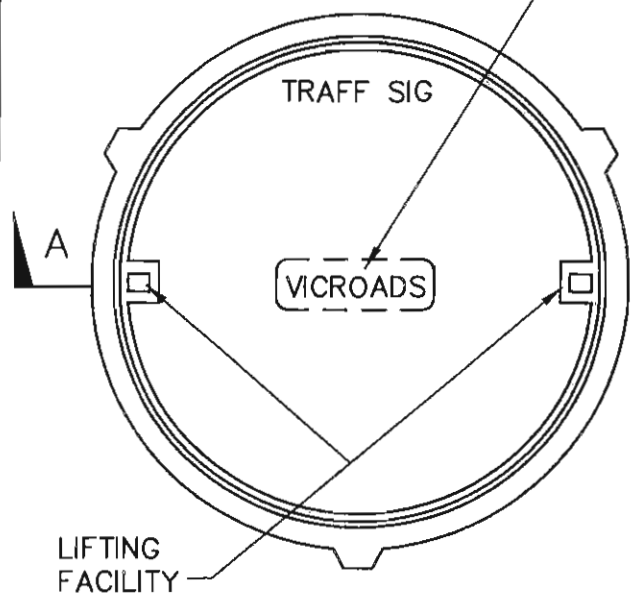
1-8-2001

REVISION

CAD FILE NAME

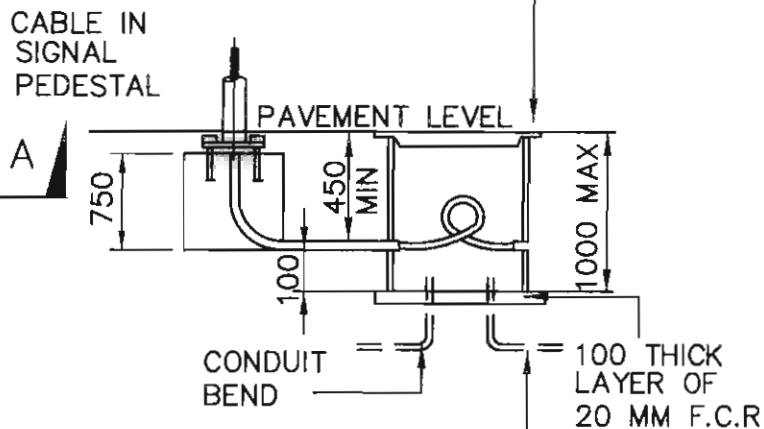
S 420.1

MARKINGS TO BE IMPRESSED OR OTHER APPROVED METHOD  
 'TRAFF SIG' - 15 MIN HIGH LETTERS  
 'VICROADS' - 40 MIN HIGH LETTERS



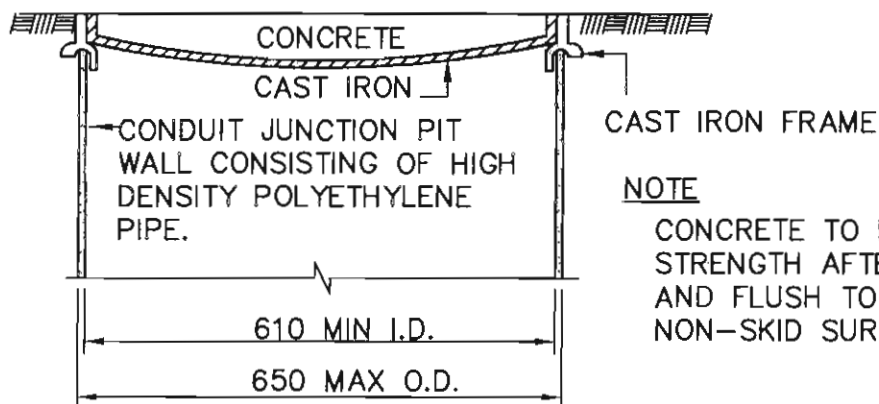
PLAN  
SCALE 1:10

CONCRETE INFILL CAST IRON  
 LID MUST BE LEVEL WITH  
 SURROUNDING SURFACE



CONDUIT ENTRY ARRANGEMENT  
 WHEN ENTRY CANNOT BE MADE  
 THROUGH WALL OF PIT.

ELEVATION  
N.T.S.



SECTION AA  
SCALE 1:10

NOTE

CONCRETE TO BE 240 KG/M3 COMPRESSIVE  
 STRENGTH AFTER 28 DAYS TROWELLED FLAT  
 AND FLUSH TO THE LID FRAME AND WITH A  
 NON-SKID SURFACE.

NOTES

- 1 ALL CONDUITS TO BE INSTALLED TO ALL RELEVANT ELECTRICITY SUPPLY AUTHORITY REGULATIONS. ALL CONDUITS TO BE HEAVY DUTY RIGID U.PVC (ORANGE). ALL CONDUIT BENDS TO BE LARGE RADIUS.
- 2 SPECIAL REGULATIONS MAY APPLY FOR CONDUITS UNDER VICROADS HIGHWAYS AND FREEWAYS AND UNDER RAIL TRACKS.
- 3 TRENCHING BENEATH ROAD AREAS TO BE BACKFILLED AND COMPACTED AS SPECIFIED SEPARATELY.
- 4 ELECTRICITY SUPPLY AUTHORITY TO BE CONSULTED REGARDS STREET LIGHTING AND ASSOCIATED DUCTING.
- 5 ALL SERVICES TO BE CHECKED PRIOR TO PLACING CONDUITS.
- 6 PULL THROUGH TO BE PLACED IN ALL DUCTS (APPROVED NYLON OR GAL. WIRE).
- 7 CONDUIT JUNCTION PIT TO BE LOCATED CLEAR OF FOOTPATHS WHERE POSSIBLE.
- 8 610 MM DIA. POLYETHYLENE PIPE FOR USE AS CONDUIT JUNCTION PIT TO BE SUPPLIED BY VICROADS IN 1 METRE LENGTHS. LIDS AND FRAMES ALSO SUPPLIED BY VICROADS.
- 9 CONDUIT JUNCTION PIT TO BE DRAINED WHEN SPECIFIED.
- 10 ALL CONDUITING TO BE TEMPORARILY SEALED TO AVOID BLOCKAGE PRIOR TO ELECTRICAL WIRING.
- 11 DUCTING TO FORM A COMPLETE CIRCUIT AROUND INTERSECTION.
- 12 WHERE CONDUITS ENTER CONDUIT JUNCTION PITS ETC THE WALLS OF SUCH PITS ARE TO BE SEALED TO PREVENT SOIL INGRESS INTO PIT.
- 13 SUB CARRIAGEWAY CONDUITS SHALL TERMINATE 300 MM BEYOND THE KERB.
- 14 PAVED AREAS ARE TO BE SAW CUT PRIOR TO EXCAVATION TO SHOW A CLEAN NEAT EDGE SUITABLE FOR SUBSEQUENT PERMANENT REINSTATEMENT.

CHECKED <i>Jon Stacey</i>
APPROVED <i>Julian</i>
SCALE N.T.S.

# KNOX CITY COUNCIL

## TRAFFIC SIGNAL CONDUIT JUNCTION PIT

DATE 1-8-2001
REVISION
CAD FILE NAME S 421.1