

# Knox Community Arts Centre Technical Specifications

Last Updated: 02/01/2024

## Contents:

Stage & Dimensions	02
Lighting	04
Audio	07
Projection	09
Communications & Visuals	10
Backstage	11
Venue Floorplan	12
Standard Lighting Plan	13



Knox Community Arts Centre, Corner Mountain Highway & Scoresby Road, Bayswater, 3135  
Phone: 9729 7287, Email: [arts@knox.vic.gov.au](mailto:arts@knox.vic.gov.au), Website <https://www.knox.vic.gov.au/kcac>

# Stage & Dimensions

## Stage Summary:

Unraked stage with a proscenium arch and apron. Concrete Slab covered with Masonite sheets and painted black. Screwing into the stage surface is permitted (subject to authorization). Larger holes must be authorized prior to booking in consultation with Venue Technician (Repair costs may apply). Stage crossover is via backstage dressing room area.	
<b>Stage Distributed Load Limit:</b>	500Kg/m2
<b>Stage Point Load Limit:</b>	N/A
<b>Stage Rake:</b>	No

## Stage Dimensions

<b>Proscenium Width:</b>	8.50m Proscenium Height: 2.95m
<b>Setting Line:</b>	Upstage edge of Proscenium, to allow for fire curtain.
<b>Stage Measurements:</b>	Setting Line 4.72m, Centre Line 2.36m
<b>SL to DS edge of apron:</b>	1.43m
<b>SL to rear wall:</b>	4.72m
<b>Overhead Obstructions:</b>	Lighting Bars are 3.95m above stage. CYC bar is 3.87m above stage
<b>Full Stage Dimensions</b>	Length 6.27m x Width 8.68m

## Auditorium

2.60m rise over 9 rows with one aisle on each side. Space to accommodate 2 wheelchairs.	
<b>Stage Level:</b>	1.07m above auditorium floor
<b>Maximum Seating Capacity (Seating bank):</b>	172
<b>Maximum Seating Capacity (Flat Floor):</b>	100
<i>*10 Round tables each with 10 seats around each. Rectangle tables also available by arrangement.</i>	

## Flying Facilities

<b>Total Number of Lines:</b>	3 x LX Bars, 1 x CYC Bar (All motorized)
<b>Panorama Lines:</b>	0
<b>Batten Type:</b>	JANDS JLX - Lighting Bars- CYC bar is 50mm O/D Alloy Pipe
<b>Batten Length:</b>	9m
<b>Batten Extensions:</b>	No
<b>Batten Pickups:</b>	4
<b>Fly Line and Bar Safe Working Load (SWL)</b>	500kg

## Draperies

<b>House Curtain:</b>	Royal Red Velvet 2 x 4.35m x 3.00m @ 80% Fullness
<i>*Please note that the house curtain is hand pulley (French Action). Control is Prompt side.</i>	
<b>Legs:</b>	(All 50% Full) 4 @ 2.5m x 5m
<b>Borders:</b>	(All 50% Full) 2 @ 9.00m x 1.00m
<b>Mid-stage Tabs:</b>	2 @ 6m x 5m, positioned mid-stage
<b>Cyclorama:</b>	White, 8.30m x 3.80m
<i>*Please note that Legs cannot be rotated.</i>	

## Access Equipment

<b>Ladders:</b>	<ul style="list-style-type: none"> <li>1 x 2.4m Aluminium single sided A-Frame Ladder</li> <li>1 x 3.9m Aluminium double sided A-Frame Ladder</li> <li>1 x 1.8m Aluminium Platform Ladder</li> <li>1 x 3.6m Aluminium Platform Ladder</li> </ul>
-----------------	--

## Loading Dock

<p>The Loading Dock is located directly behind the stage. It has access to stage via access door (PS), or via rolling stage door (PS off Centre).</p> <p>Loading access is via the carpark entrance on South side of building. Dedicated car / truck parking is located directly outside this door.</p> <p>Piano must be moved onto stage before any equipment can be loaded through the doors.</p>	
<b>Loading Dock access via ramp from carpark:</b>	1.4m (W)
<b>Loading Dock Height:</b>	3.37m Door Dimensions: 3370mm (H) x 2800mm (W)

## Lighting

### On-Stage Lighting Bars

3x	On-stage Electrics bars @ 9m long, JANDS JLX Bars
1x	On Stage CYC bar against rear wall, 9m long 50mm OD pipe
12x	Dim/GPO circuits per bar (evenly distributed)
2x	DMX 5-pin patches per bar
<i>*All bars are fixed in their position and cannot be swung</i>	

### FOH Lighting Bar

1x	6000m long, 48mm O/D pipe
6x	Dim circuits
6x	GPO circuits
1x	DMX 5-pin patch:
SL to FOH Bridge:	5.82m @ 55 deg
Access via Platform Ladder.	
<i>*4 Rows of seating bank must be removed for ladder access</i>	

### FOH Perches (PS & OP)

4x	Dim/GPO circuits (vertically placed)
<i>* Perches are vertical</i>	
<i>* Max 3 Dimmable channels with outlets on each side</i>	
<b>Maximum Fixtures per perch:</b>	2

### Other LX DMX Patching

1x	DMX 3-pin: DSPS at Stage Managers desk
1x	DMX 5-Pin: Backstage PS in Loading Dock

### Dimmer/Distribution

The Dimmer Bay for the theatre is located in the loading dock area, directly behind the stage. All lighting bar patches pre-patched for standard lighting rig	
3x	Dynalite Pro Pak 2.4Kw 12ch
<b>Total Number of Dimmers:</b>	36 x Dimmer/Hot Power Outlets
<i>*All Dimmer/Distribution channels can be changed to suit all applications</i>	

## Other Power

2x Single GPOs	2 (1x on upstage wall, 1 on OP side wall)
2x Double GPOs	2 (1x DSPS near Stage Manager's Desk, 1x DSOP)
3x 32A	4 (Dimmer Bay currently used for Dimmer/Distribution, Stage Manager's Console)

## Consoles

<b>Lighting Desk:</b>	MA onPC Command Wing
<b>Control Channels:</b>	2048 parameters
<b>Signal Output:</b>	DMX512
<b>Signal Distribution:</b>	DMX512 4 way splitter onstage 1x DMX 5-pin PS side of stage 1x DMX 5-pin PS backstage (at dimmers) 5x DMX 5-pin – 3pin adapters available

## House Lights

<b>Fixtures:</b>	Dimmable floodlights
<b>Stand-Alone Control:</b>	Available from the Stage Manager's Desk, bio or prompt side theatre entrance. 100%, 75%, 25%, 0% presets Fixed Fade Time - 5 sec

## Work Light

<b>Fixtures:</b>	Fluorescent batten lighting in roof. Controllable via Dynalite panel (on/off)
<b>Stand-Alone Control:</b>	Available from the Stage Manager's Desk, bio or prompt side theatre entrance

## Conventional Fixtures

Make	Model	Purpose	Beam Angle	Accessories	Wattage	Total
Prolite	PR7	Profile	22 – 40	Gel frame Shutter set	650w	4
Prolite	PR10-F	Wash	7 – 63	Gel frame Barn Doors	1000w	8

## LED Fixtures

Make	Model	Purpose	Beam Angle	Specifics	Wattage	Total
GTD	LMZ1512 Wash Zoom Moving Head	Moving Wash	7 - 45	RGBW	15w	10
Infinity	S201 Spot	Moving Profile	12 - 30	Dual Colour Wheel Dual Gobo Wheel	150w	4
Showtech	Polar 300 Hybrid	Moving Profile	3 - 30	Colour Wheel Gobo Wheel	300w	
Chauvet	Slimpar Pro Hex	Stage Wash	41	RGBWAUV	10w	15
Chauvet	Ovation C-640FC	Cyc Wash	45	RGBWA	5w	6
Chauvet	Ovation F-915FC	Front Wash	17 - 54	RGBAL	3w	11
Chauvet	Ovation E-260WW	Profile	25-50	Warm LED	230w	7
Chauvet	Ovation E-930VW	Profile	25-50	RGBOLR	3w	4
Chauvet	Freedom Stick	Effect	N/A	RGB	Battery	8
Chauvet	Colorband H9	Effect	29	RGBWAUV	10w	6
Chauvet	Freedom Flex H4 IP X6	Effect	23	RGBWAUV	Battery	6
Chauvet	120ST LED	Follow Spot	14 - 20	7 separate colours	120w	1

## Atmospherics

Make	Model	Type	Specifics	Wattage	Total
Swefog	K1	Hazer	DMX	1500w	1

## Audio

### Control Positions

<b>Bio Box:</b>	Located above the rear of the auditorium, standard location for house console
-----------------	---

### Consoles

<b>Allen &amp; Heath SQ7 Digital Console (Primary)</b>	48 input channels (40 mono, 3 stereo) 12 Busses. 3 Stereo Matrixes. 8 FX engines. 16 assignable mute groups. 7" touch screen. 33 Faders.
<b>Allen &amp; Heath QU24 Digital Console (Backup)</b>	26 input channels (24 mono, 1 stereo) 12 busses. 4 DCA Control Groups, 4 Mute Groups, 4 Group Outputs, 2 Matrix Outputs. 4 FX busses. 5 inch touchscreen.

### Stage Rack

<b>Audio Rack:</b>	Located PS Stage Managers Desk Allen & Heath AR24/12. 24 IN, 12 OUT, Monitor Out
<b>Audio Rack:</b>	Allen & Heath AB1608 - 16 In, 8 Out

### FOH Speakers

QSC K12.2 Active Speakers	2x (Left and Right)
KV Ex 2.2 Active Subwoofer	1x (Located DSC, under stage)

### Monitors

DB Technologies Opera 12 600w	6
-------------------------------	---

## Microphones

Make	Model	Details / Accessories	Total
Shure	SM57	Dynamic Instrument Mic	4
Shure	SM58	Dynamic Vocal Mic	6
Rode	M5	Cardioid Condenser Mic	8
Sennheiser	E904	Tom Mic with Clip	3
Sennheiser	E902	Drum Mic	1
Shure	819	Surface Mount Mic	2
Sennheiser	G3 100 Series Wireless	Radio Mic Receivers	4
Sennheiser	100 Series 845 capsule	Handheld wireless Microphone	4
Jag	IM-5	Directional Headset Microphone	4
Chiayo	Performer Live-100 Series	Radio Mic Receivers	2
Chiayo	Headset Mic	Skin Tone headset	2
Chiayo	Lapel Mic	Clip/head mount	2
Peak	DI Box	Single Active DI	5
Radial	USB DI	USB to Balanced XLR	1
Radial	Bluetooth DI	Bluetooth to Balanced XLR	1
Radial	Pro-AV2	6.5mm/RCA/3.5mm to Balanced XLR	1
Hosa	Pro-Conex Little Bro SH-8X0-50	8-way analogue stage box	2

## Stands

<b>K&amp;M Short Boom Stand</b>	3
<b>K&amp;M Tall Boom Stand</b>	12
<b>Straight Stand (Black)</b>	2
<b>Music Stands</b>	5

## Orchestral

1x	Schimmel K189 Concert Grand Piano <i>*Stored in Loading Dock when not in use</i>
----	---



# Projection

## Projectors

<b>Theatre:</b>	<p><b>Epson EH-TW6700 digital projector</b>            Full HD 1080P Resolution            3000 Lumens            Fitted with variable zoom lens            Projector is mounted on FOH lighting bar            HDMI only with USB-C and Mini Display Adaptors</p>
<b>Meeting Room:</b>	<p><b>Epson EH-TW6700 digital projector</b>            Full HD 1080P Resolution            3000 Lumens            Fitted with variable zoom lens            Projector is mounted on Meeting Room Roof and focused onto electric screen.            HDMI only with USB-C and Mini Display Adaptors            Stage feed inputs available on request with reasonable notice</p>

## Projection Surface

<b>Cyclorama Cloth:</b>	9m x 4m
<b>Meeting Room Screen:</b>	2.4m x 1.5m

## Play-Back Equipment

<b>Apple Macbook Pro</b>	USB-C input. HDMI connection to projector. Plays via QLab
--------------------------	---

# Communications & Visual

## Stage Manager's Desk

Located DSPS, facing onstage (Cannot be moved)	
1x	Desk Lamp
1x	Comms Master Station
1x	House LX Control
1x	Curtain Control (Manual Pulley)
2x	9" LCD Screens (Mounted on front)
1x	24" LCD Screen Camera Feed (Mounted on Wall)

## Talk-Back System

<b>Master Unit:</b>	Jands E101
<b>Total Sub Stations:</b>	5 x E101 Beltpacks (Single Channel)
<b>Total Headsets:</b>	5
<b>Talk-Back Patching Locations:</b>	3x Bio (Audio, Lighting and Projection) DSPS (SM Desk) DSOP

## Camera Feeds

<b>Stage Camera:</b>	Starvis Bullet 2MP IP/SDI Camera Mounted in Auditorium in front of Bio
<b>Portable Conductors Camera:</b>	Gator Butterfly G30CL Mounted on Mic Stand, can be patched throughout building via CAT6
<b>Venue Cameras:</b>	DOSS Dome AHD 1080P SDI Camera Mounted in Green Room, Onstage, Loading Dock, Foyer & Supper Room

## Monitors

<b>Bio:</b>	2 x 24" LCD (DVR Feed & Conductors Feed)
<b>DSPS (SM Desk):</b>	2 X 9" LCD (Conductors Feed & DVR) 1 x 24" LCD (Stage Feed)
<b>DSOP:</b>	1 x 24" LCD (Stage Feed)
<b>Loading Dock:</b>	1 x 40" LCD (Stage Feed)
<b>Green Room:</b>	1 x 40" LCD (Stage Feed)
<b>Dressing Rooms:</b>	2 x 32" LCD (Stage Feed)
<b>Foyer:</b>	1 x 40" LCD (Stage Feed)
<b>Auditorium:</b>	1 x 40" LCD (Conductors)

# Backstage

## Dressing Rooms

Dressing Room	Toilets	Details
Dressing Room 1	1	Wash Basin & Mirror
Dressing Room 2	1	Wash Basin & Mirror

## Laundry / Wardrobe

<b>Laundry Facilities:</b>	Front Loader Washer and Dryer in store room
<b>Wardrobe:</b>	2 x Clothes Racks

## Wi-Fi

<b>Free Internet</b>	Yes – Unsecured Network, T&C acceptance required
----------------------	--

## Green Room

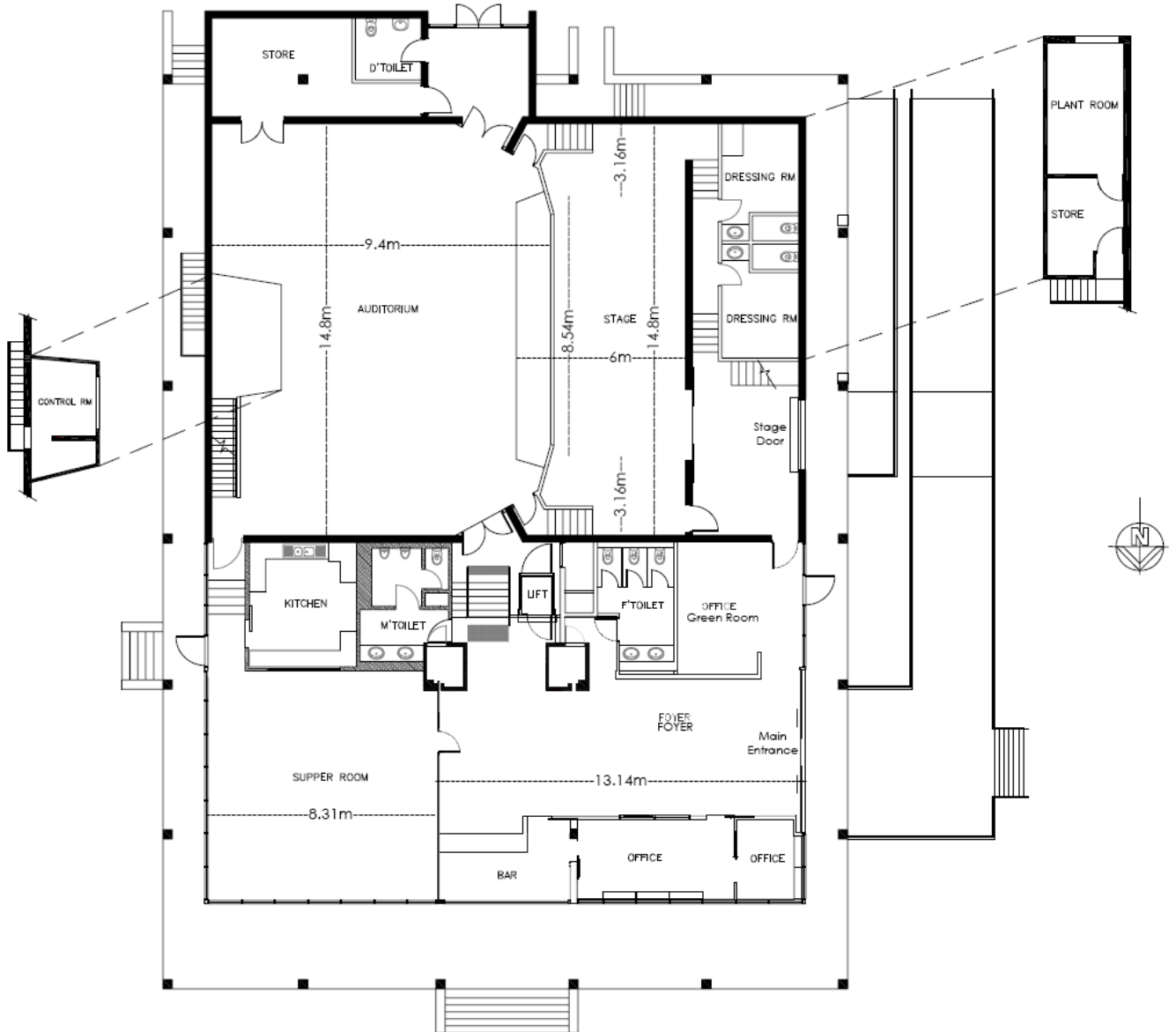
The Green Room is located next to the Backstage Loading Dock. It can be used as a production office by arrangement. The room can be curtained off from stage door entrance. The Meeting Room can also be made available as Green Room for larger groups by arrangement.

<b>Tea / Coffee Facilities:</b>	Yes, by arrangement
<b>Fridge/Freezer:</b>	No, however meeting room kitchen is available on request
<b>Microwave:</b>	No, however meeting room kitchen is available on request

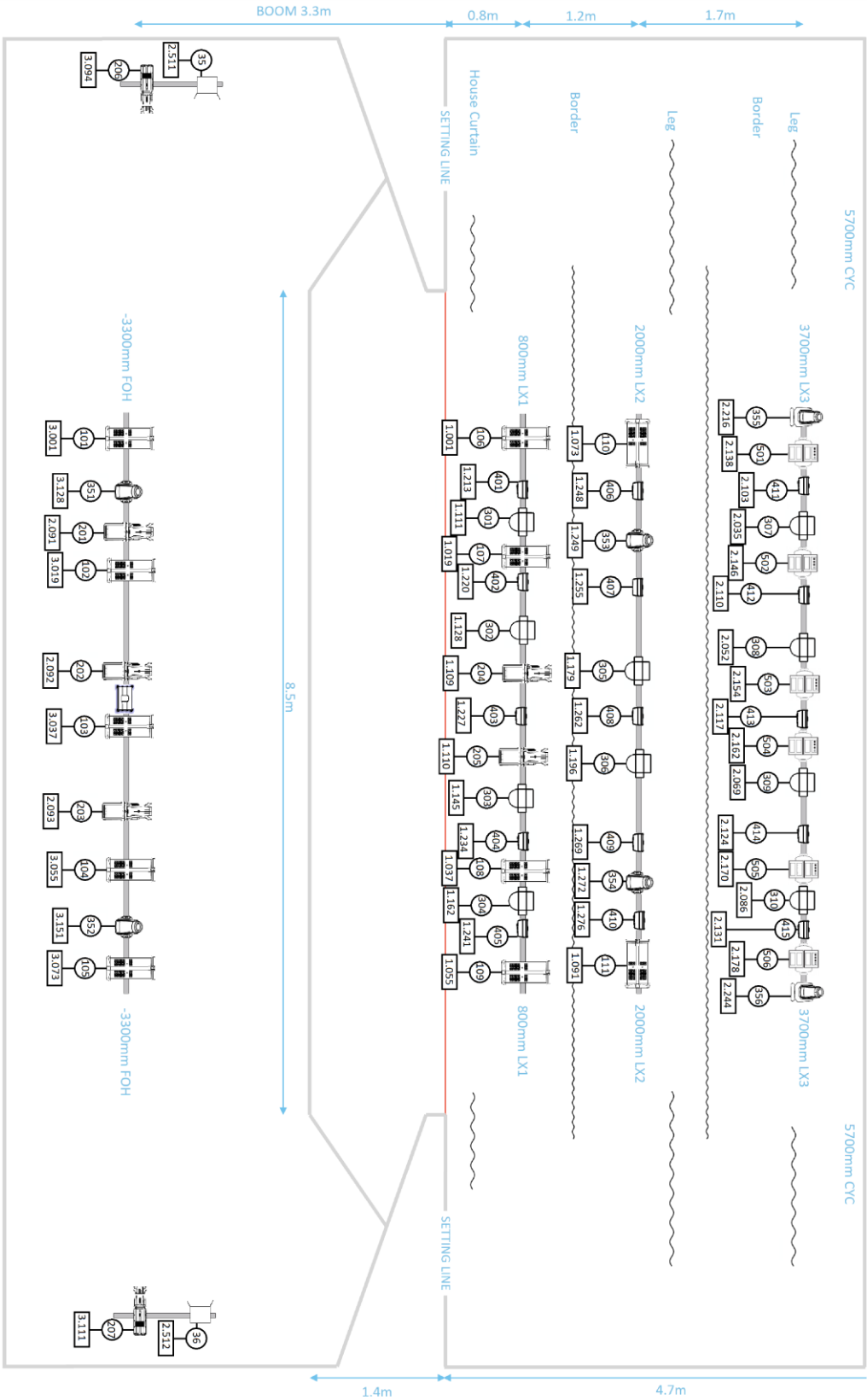
## Stage Door

Stage Door located between loading bay doors and the main lobby entrance, entering into the Green Room which can be curtained off. Door unlocked from access times.

# Venue Floorplan



# Standard Lighting Plan



\* Not to Scale. Measurements to be used as a guide

## KCAC Standard Lighting Plan