

## About Immerse

Immerse is an art exhibition that transforms the City of Knox into a living art gallery. Intriguing art experiences takes over every day spaces - inviting the public to encounter the unexpected.

Immerse is one of greater Melbourne's largest public art events. Staged outside the traditional confines of an art gallery, this biennial event encourages brave new ideas across all art disciplines and mediums.

Immerse makes art more accessible by engaging people as part of their everyday lives. It provides artists with an opportunity to experiment, collaborate and expose their work to new audiences. Immerse encourages audiences to learn from, experience and converse with artists, reflecting and contributing to the cultural fabric of our city.

Immerse 2021 has been re-imagined for a coronavirus world. This year, we've created a flexible program in line with COVID-19 restrictions, with a focus on self-guided tours, virtual and audio experiences. Scan the QR code below to find out more, or visit [www.knox.vic.gov.au/immerse](http://www.knox.vic.gov.au/immerse)

FULL PROGRAM:



# KNOX

your city

## A message from the Mayor

The Immerse art exhibition program is an example of Knox City Council's commitment to supporting and enhancing the arts sector in our community, particularly in a time when creative industries have faced significant and persisting challenges.

From 13 November, Knox residents and visitors will see surprising artworks from 33 artists and exhibitions throughout the City of Knox. This year installations will take over two of Knox's historic homesteads, transforming the immense rooms and spectacular gardens. There will be ghostly performances and unexpected sculptures, projections and words of hope. Immerse represents a vast selection of innovative artistic styles and thought-provoking work. This year the art will be showcased through a hybrid digital program of online and in person art journeys and experiences. Available from the comfort of your own home or strolling around your local area!

This is the fifth year Knox Council has been proud to present this innovative arts initiative. It is pleasing to see artists represented from Knox and Victoria-wide, working closely with the local community in the development and presentation of their work.

Council is pleased to support programs and projects that offer the community opportunities to access art in many forms. Immerse is also an opportunity to support local artists, the creative industries they work in and the wider arts community.

I hope you enjoy the extraordinary works, take part in a self-guided audio journey with the artists and encounter the unexpected as you go about your days, this November.

Cr Lisa Cooper, Mayor of Knox Council

Immerse.  
Art in  
unexpected  
places.

# KNOX

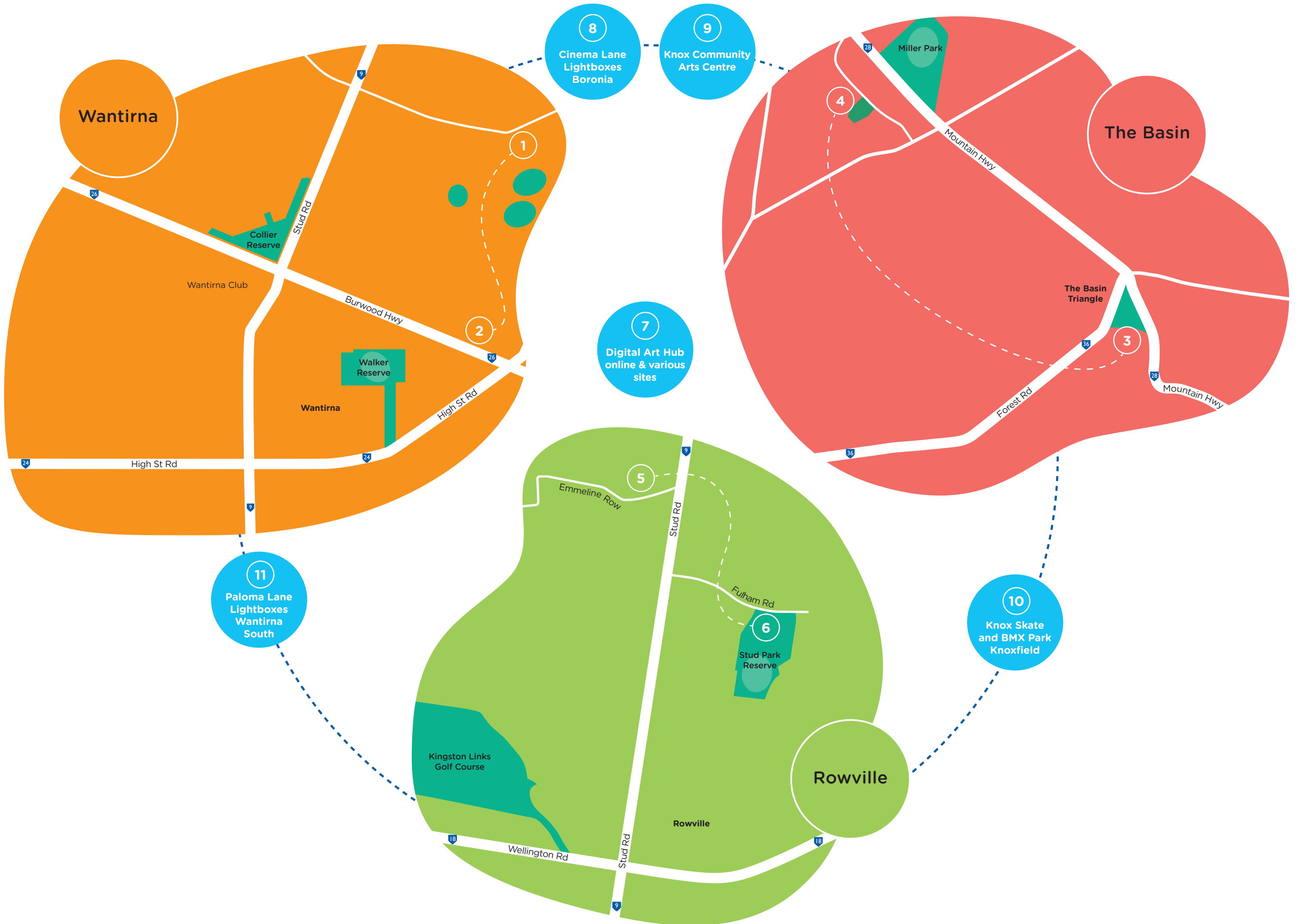
your city

Immerse.  
Art in  
unexpected  
places.

33 Artists  
Exhibitions

+ DIGITAL PERFORMANCES

From  
Mid November 2021



## Exhibition Sites

### Wantirna

- Orana Neighbourhood House  
House 62 Coleman Road,  
Wantirna South VIC 3152  
Toshi Handa
- Knox City Council Civic  
511 Burwood Hwy,  
Wantirna South VIC 3152  
Lynn Berry\*

### The Basin

- The Basin Triangle  
1326 Mountain Hwy,  
The Basin VIC 3154  
Rebecca Westlund  
Sonia Zymantas  
Carla O'Brien
- Millers Homestead  
Dorrigo Dr & Melrose Ct,  
Boronia VIC 3155  
Carolyn Menzies  
Giordano Biondi  
Molly Stephenson  
Clara Chan  
Sara Catena  
Simone Melville  
Hsin Lin  
Natalie Wijeyeratne  
Marc Savoia\*

### Rowville

- Stamford Park Homestead  
8 Emmeline Row,  
Rowville VIC 3178  
Gretel Taylor  
Wendy Yu  
Marshall Arts Club  
Rebecca George  
Rebecca Westlund  
LUCIANO
- Rowville Community Centre  
40 Fulham Rd,  
Rowville VIC 3178  
Soyoun Kim  
Hayden Dewar

### Digital Artists

- Digital Art Hub  
Nicholas Barker & Jessica Tanto  
Susannah Langley & Arnaz  
Dadfar & Warren Armstrong  
Wesley Dowling

### Satellite Hubs

- Cinema Lane Lightboxes  
Dorset Square,  
Boronia VIC 3155  
Next to Metro Cinema  
Marc Savoia
- Knox Community Arts Centre  
790 Mountain Hwy  
Bayswater VIC 3155  
Jack Tar & Co.
- Knox Skate and BMX Park:  
Pavilion: Fausto Gallego  
Billboard: Simone Thomson
- Paloma Lane Lightboxes  
1332 High Street Road  
Wantirna South VIC 3152  
Mikaela Stafford

\*Summer Programming Early 2022

Please check the  
website for Venue  
Open and Close details.



## Meet the Festival Team

### Council Curation and Project Management



**Kim de Kretser** is Immerse 2021's Artistic Director. Kim is an independent creative producer, curator and artist, who has designed and delivered an extensive list of highly innovative public art platforms and arts projects. Her work encourages audiences to engage in new creative conversations. Kim has been involved in Immerse since 2017 as both a curator and the Community and Public Arts Officer for the City of Knox and brings her extensive experience in public art, content creation, marketing and events to the program.



**Madé Spencer-Castle** is Immerse 2021's Curator. Madé is an independent curator and producer based in Naarm/Melbourne, who has held positions including Curator of Exhibitions at the Centre for Contemporary Photography (CCP) (2018-2020), Gallery Curator at Bus Projects (2015-2018), Associate Curator at Queen Victoria Museum and Art Gallery (2015-2018) and co-Director of DUDSPACE (2012-2015). Madé has curated and produced a long list of independent exhibitions and currently is the associate director at Neon Parc Art Gallery.



**Jeannie Mueller** is Immerse 2021's Community and Public Art's Officer at the City of Knox. Jeannie has been writing, curating and participating in the Arts in both New Zealand and Australia since 2006. Jeannie's curatorial focus is creating inclusive and engaging spaces that reach beyond typical arts audiences. She is particularly interested in using the arts as a tool for social inclusion and education. Jeannie has been a part of the Immerse team since its beginnings in 2015 first as curator and then as project lead in her capacity as Community and Public Art Officer.

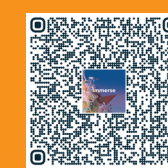
## Digital Journeys

This year we've designed a series of audio tours and digital experiences. Take a walk with us as we journey along with our Immerse artists.

These fascinating and often surprising conversations will be a picnic for your ears, whether you are on a self-guided tour, relaxing on your couch or out for a weekend stroll. Just click the QR code below or wherever you happen upon an Immerse artwork.

In addition, we have created a series of video's and image galleries of all our exhibits, installations and experiences, available online for everyone to enjoy.

Direct audio tours:



## Key Immerse Sites

Works presented by multiple artists

### Millers Homestead

The works presented throughout Millers Homestead respond to the domestic grandeur of this historic site. Sprawling and immersive, artists' installations will be presented both within the vaulted rooms of Millers the Homestead and throughout the manicured grounds. Traversing ideas of labour, existentialism and community, the artists at Millers Homestead work across diverse mediums, including sculpture, installation and video projection.

### Stamford Park Homestead

Presented amongst the majestic grounds of Stamford Park, artists drape out on the lawns, in the gardens, and throughout the historic Homestead. With a lightness of touch and an interest in exploring shared histories and perceptions, works presented at Stamford Park Homestead include sculptural installations, video projection and performance.

### Rowville Community Centre

At Rowville Community Centre, artists present work that engage with communities through photography and a newly commissioned mural.

### The Basin

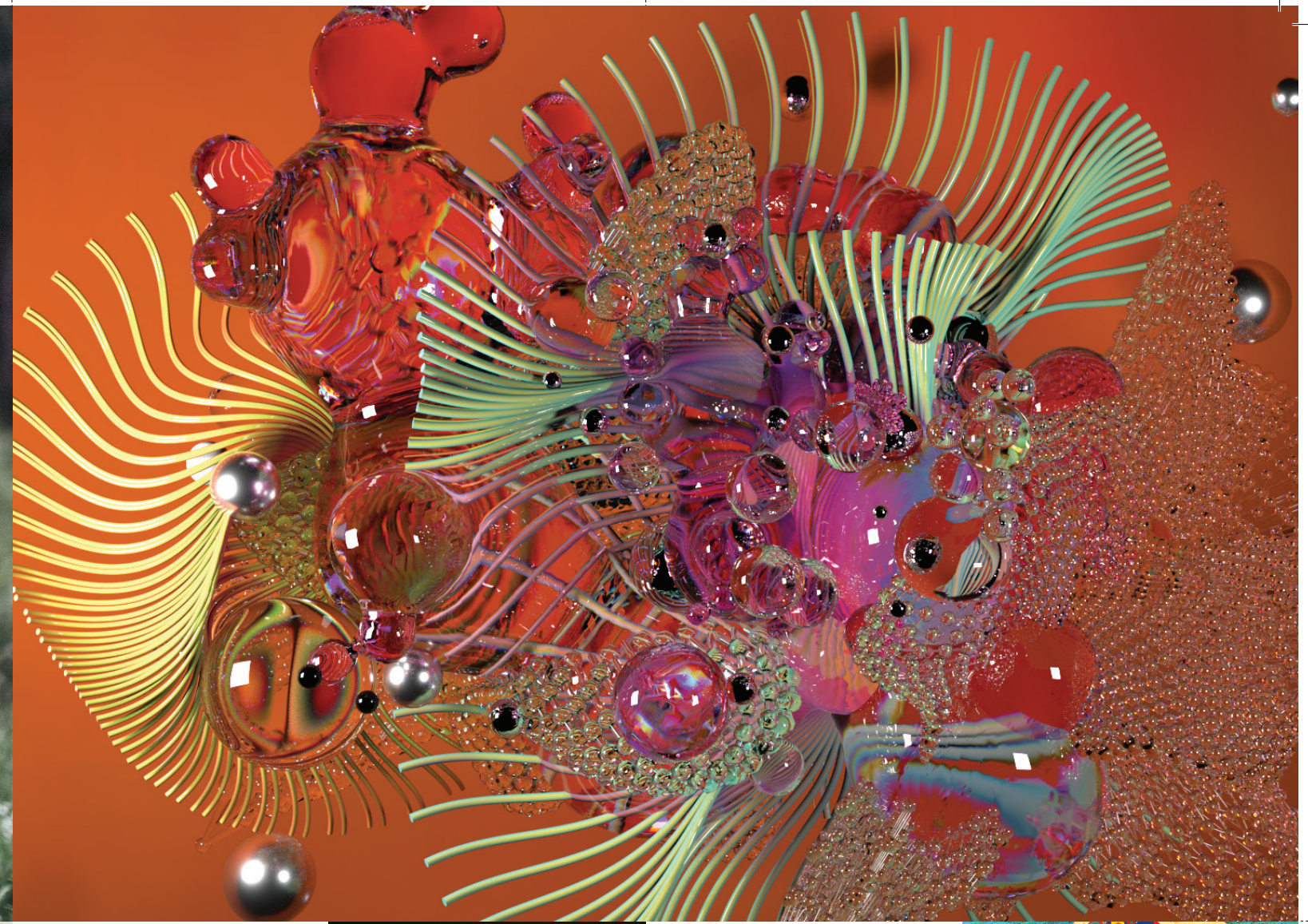
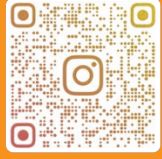
At the Basin, a series of text-based installations are presented by Immerse 2021 artists. These artworks investigate a fascination with everyday language used in advertising and wayfinding, to consider the power of language to infiltrate, and inform our subconscious.

### Knox Civic Centre

\*Coming 2022

Presented in the foyer space of the Civic Centre, artists come together to collectively engage with community. Bold and colourful they celebrate our relationship to the place we live in, nature and our hope for the future.

Stay up to date and follow us on Instagram at @knoximmerse



### Nicholas Barker and Jessica Tanto

#### Please Take One

Please Take One is an evolving network of community-contributed audio pieces, exploring the internal worlds of everyday artists and creatives. Available online and in-person, as a listener or a contributor, Please Take One aims to strengthen creative networks and communities.

7



### Lynn Berry

#### Winter Garden

Winter Garden is a joyous and playful installation of handcrafted flowers in a range of bright and riotous colours. The work comprises of thousands of individual blooms that have been created by hundreds of makers from across Australia and beyond and brought together by Lynn Berry.

2



### Giordano Biondi

#### The Folds

The Folds is a homage to the blankets, sheets and covers that contain, hide and protect us, as well as our material possessions. The installation is comprised of a collection of natural and synthetic materials manipulated into a series of undulating sculptural forms that suggest the presence of objects and people beneath.

4

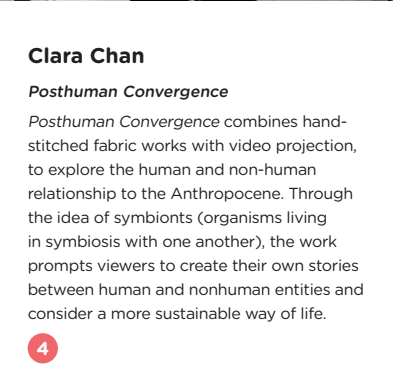


### Sara Catena

#### Shrine of the Sacred Self

Shrine of the Sacred Self reflects on the unpredictability of the life we live—inviting us to experience a moment of reflection—through a series of pocket shrines installed throughout the grounds of Millers Homestead. Presented as a marvellous treasure hunt, Shrine of the Sacred Self invites viewers to explore the delightful gardens and take a moment to pause and reflect.

4



### Clara Chan

#### Posthuman Convergence

Posthuman Convergence combines hand-stitched fabric works with video projection, to explore the human and non-human relationship to the Anthropocene. Through the idea of symbiosis (organisms living in symbiosis with one another), the work prompts viewers to create their own stories between human and non-human entities and consider a more sustainable way of life.

4



### Marshall Arts Club

#### Glitch Garden

Glitch Garden is a sculptural installation that subtly distorts the natural environment. Mirrored objects are placed amongst the natural vegetation at Stamford Park Estate, reflecting light as it changes throughout the cycles of day and night. The works appear as 'glitches' in the landscape.

5



### Hayden Dewar

#### Shelter

Hayden Dewar's mural Shelter has been developed in response to the growth of our urban spaces and the impact this has on the ecological diversity that once inhabited these spaces. Using imagery that includes local vulnerable native fauna species, Dewar's work emphasises the need to incorporate a sustainable environmental approach into our modern ways of living.

6

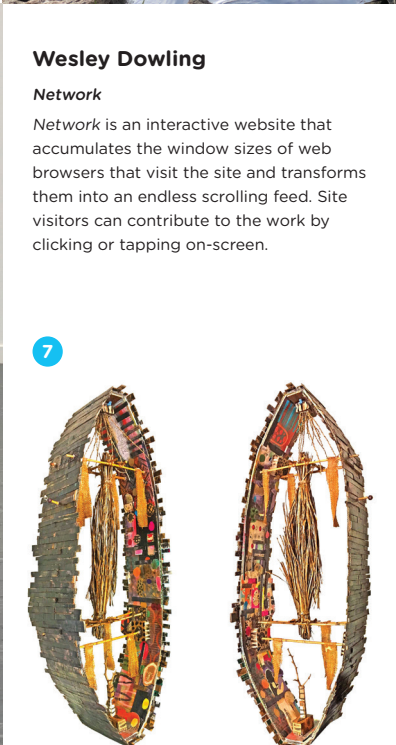


### Wesley Dowling

#### Network

Network is an interactive website that accumulates the window sizes of web browsers that visit the site and transforms them into an endless scrolling feed. Site visitors can contribute to the work by clicking or tapping on-screen.

7

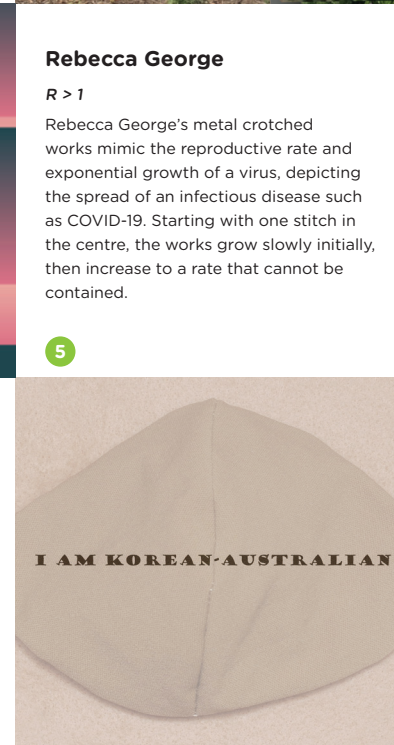


### Toshi Handa

#### Monument of Respect

Inspired by the human fight against malaria in an African village, the Monument of Respect is a visual tribute to the one quarter of the population living with a disability. This striking structure is created as collaboration between Handa and art students with a disability and represents the human need for mutual respect for our society to thrive.

1

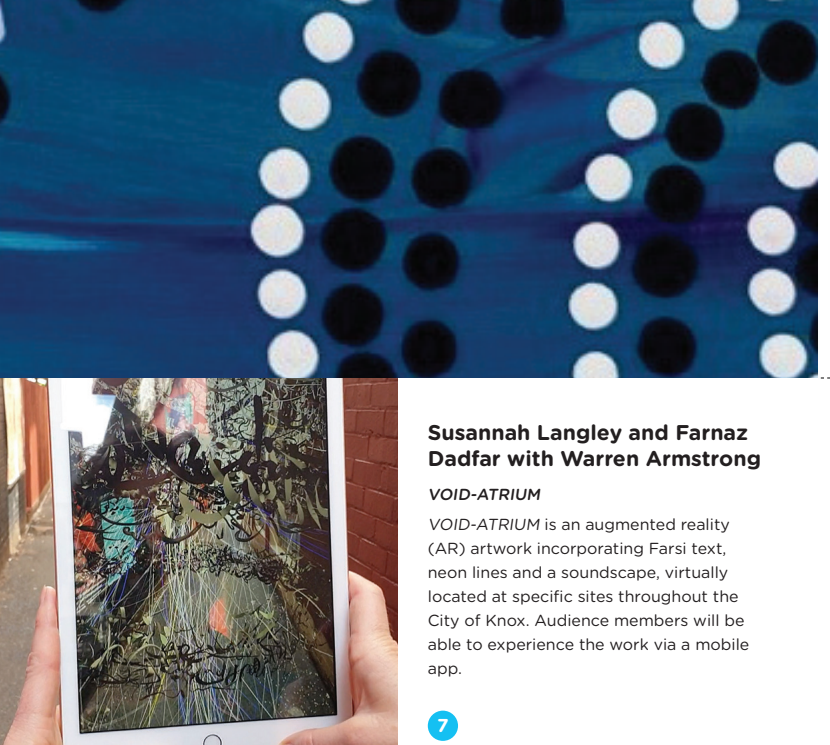


### Rebecca George

#### R > 1

Rebecca George's metal crocheted works mimic the reproductive rate and exponential growth of a virus, depicting the spread of an infectious disease such as COVID-19. Starting with one stitch in the centre, the works grow slowly initially, then increase to a rate that cannot be contained.

5



### Hsin Lin

#### Blossoms of Life

Blossoms of Life is an extension of Hsin Lin's ongoing, award-winning series of acrylic paintings that feature native and common flowers. In Lin's paintings, flowers represent life and each different type of flower has a unique symbolic meaning. Lin's paintings, a series of flowers in full bloom, reminds us that we are alive, vibrant and blossoming.

4



### LUCIANO

#### Spinning Yarns

Spinning Yarns is an interactive performance, inviting the public to recount their stories with LUCIANO, who will then spin them into yarns. Presented at Stamford Park Homestead, the stories will be translated by the artist in real-time by spinning yarn on a drop spindle and incorporated into fabric artworks.

5

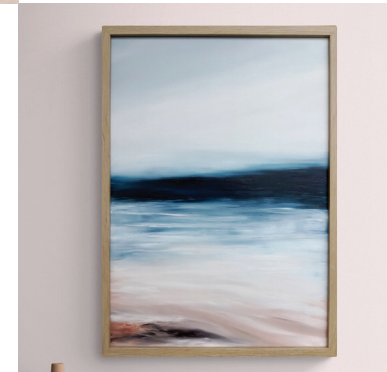


### Simone Melville

#### Eden

Eden is a series of atmospheric and expressive landscape paintings that depict horizons and oceanic scenes. The works emphasise the dynamic, sublime beauty of natural phenomena and aims to express this through the aesthetic possibilities of painting.

4

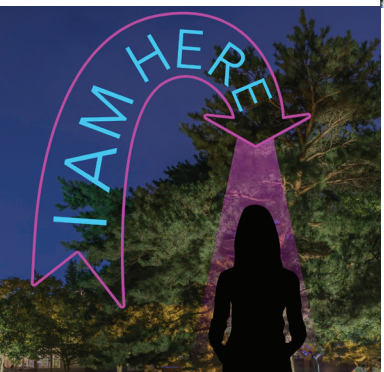


### Carolyn Menzies

#### Carbon Cocoonery

Utilising materials found under the kitchen sink, Menzies explores the invisibility of domestic labour, playfully wrapping, knitting and altering steel, wool and mesh. The resulting sculptural forms celebrate the underrepresented efforts of domestic labour, pointing towards broader social politics.

4



### Carla O'Brien

#### I AM HERE

In the past year, we have all been localised to our neighbourhoods. As a result, many of us have developed a deeper appreciation of where we live. I AM HERE marks the place where you are—right here, right now—in the present. Created using LED neon flex lighting and fabricated steel, I AM HERE celebrates radical locality, welcoming visitors to the City of Knox.

3

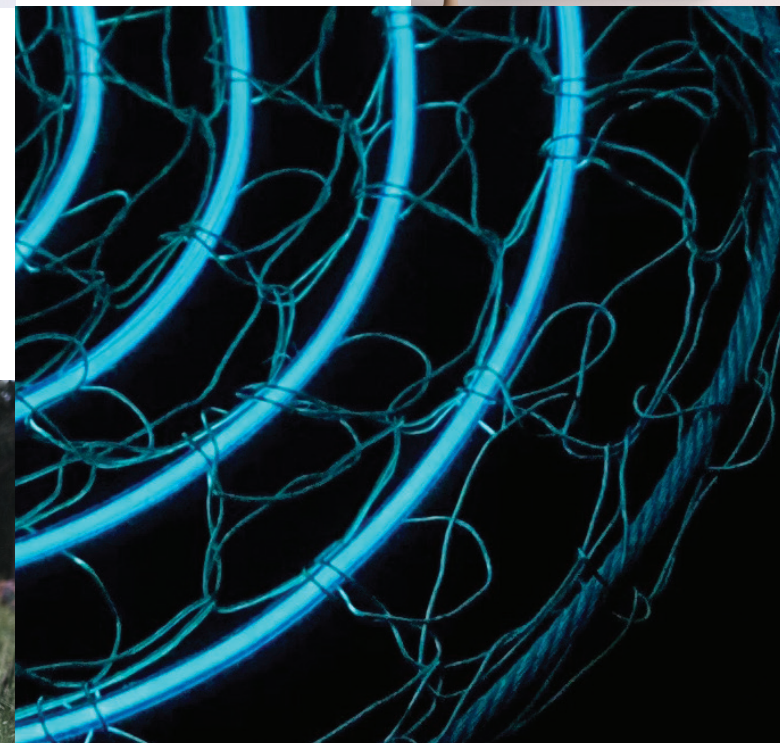


### Marc Savoia

#### Wunderkammer

Savoia's Wunderkammer Series is a contemporary take on the historical tradition of collecting rare and obscure objects for display. This series of collages invites you into weird and wonderful worlds inspired by the Wunderkammer (German for 'Cabinet of Wonder'), creating playful and intricate masked figures exploring metamorphosis and transformation.

4



### Molly Stephenson

#### Spaces of reflection between parts

Theatrical and confessional, Spaces of reflection between parts is a sculptural dinner party presented in the 19th Century dining room at Millers Homestead. Setting the plate by combining toxic sculptural forms with edible food, visitors are invited to 'ingest' the installation through sight, touch and smell.

4



### Gretel Taylor

#### Restless

Restless is a dance performance responding to the site of the historic Stamford Park Homestead. Taking on the spirit of an early settler, Taylor lingers uneasily around the 1880s homestead and garden, merging and reflecting the qualities of her environment. Aware of the processes of colonisation and how they continue to impinge upon today, this ghost is unable to rest.

5

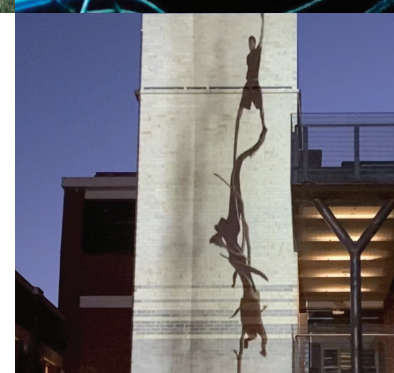


### Natalie Wijeyeratne

#### Flagship I and Flagship II

This series of brightly coloured flags are a homage to multiculturalism, diversity, and community. Each colour alone is insignificant; however, when brought together, the colours harmonise, emphasising the power and potential that differences in our society can offer, when working side by side.

4



### Wendy Yu

#### Acts of Holding Dance

Acts of Holding Dance is a large-scale projection installation that features dancers dancing with digital design. The work was developed during an artist residency at the Centre for Projection Art and was inspired by Anna McDonald's thesis paper about the temporality of loss and its exaggeration through movement composition.

5

### Jack Tar & Co

#### Atmosphere Absolute

Atmosphere Absolute is a series of photographs presented by Job Tubby exploring water as a psychological and emotional space. These shadowy, illusory forms are made by experimenting with light and water, creating a tension between the artificial and natural and inviting us to consider water beyond a mere physical property.

9



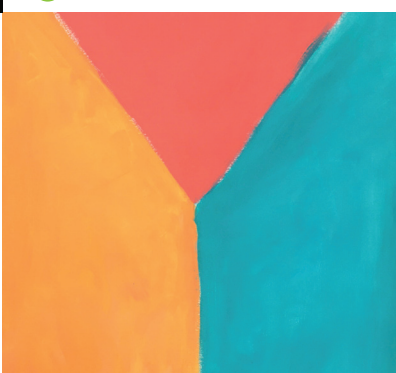
### Rebecca Westlund

#### Acts of Hope

Acts of Hope is a series of two-word signs that act to remind us that hope can appear at unexpected moments. At a time of ever-evolving crisis, Westlund's multi-location text installations act like a gift to the local community, unobtrusively accompanying them as they go about their everyday lives.

3

5



### Fausto Gallego

#### Moving Forward

Inspired and informed by the talented Songline Skateboarding crew, Moving Forward creates a place that is inclusive and inspiring. A future created by connection, hard work, innovation, and action. The mural represents artwork, conversation and ideas from the local community exuding Faustos' signature style of bright colours and dynamic movement.

10

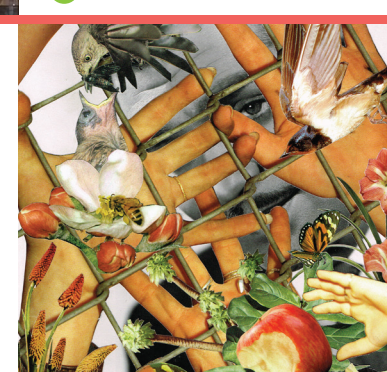


### Marc Savoia

#### Nothing Between Us

Presented across eight lightboxes in Cinema Lane are Marc Savoia's intricate and alluring collages, reflecting the history and tropes of cinema across genres and decades. Developed in response to this unique site, fragments of images overlay and caress one another, forming new meanings and constellations.

6

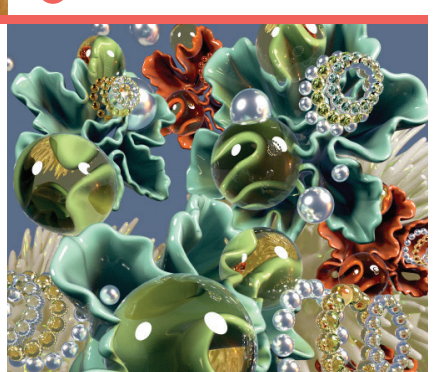


### Mikaela Stafford

#### Smoke Screen

Smoke Screen is a spectacular lightbox installations featuring bright fantastical 3D animations. The work explores the convergence between our digital and physical worlds where at time their distinction is indiscernible. The strange spaces visualise impossibilities, intangible realities and strange forms that viewers are invited to explore with their senses.

11



### Simone Thomson

#### Wala Yapaneyeput, Water Together

Thomson creates this work, Wala Yapaneyeput, in honour of Kooka Yarmuk of the Ulupna Clan, Yorta-Yorta Tribe – her great-grandmother. Yarmuk was a teacher and translator of language and it is here Thomson pays her respects to her legacy. This is the story of her translation and song – 'Burra Ferrra, 'wala' (water) coming 'yapaneyeput' (together).

10

